



DATASHEET

MAGNETIC DOOR SENSOR

MS-1



Revision: rev. A
Date: 20.11.2025.

Magnetic door sensor MS-1 - C00002272

The magnetic door sensor (reed switch) provides information about the status of the door leaf (open/closed).

The magnetic sensor is installed in the door frame. On the opposite side of the magnetic sensor, in a door leaf, a permanent magnet is installed. When the door is closed and the permanent magnet is on the opposite side of the sensor, the sensor contact is closed. When the door is open and the permanent magnet is away from the sensor, the sensor contact is open.

The magnetic door sensor is mounted on a stainless-steel plate that is fastened to the door frame with two screws. The conductors that come out of the magnetic door sensor are internally connected to the sensor contact, while the other ends are connected to a male SMR-02V connector.



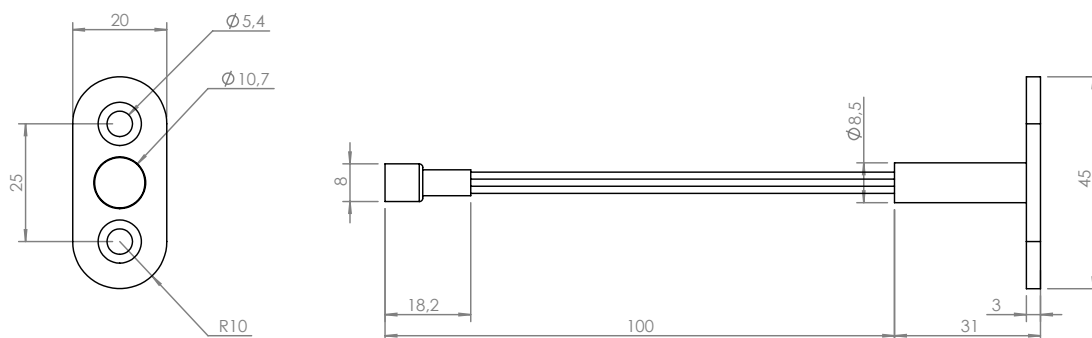
Permanent magnet and magnetic door sensor

Type of the contact	NO
Max. voltage ¹	200 V DC
Max. current ¹	0,5 A DC
Activation distance	13,5 mm
Deactivation distance	30 mm

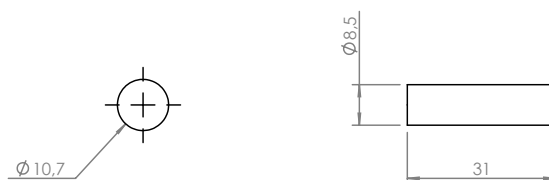
¹ Product of the switching voltage and current should never exceed 10 VA

Technical characteristics of the magnetic door sensor

Magnetic door sensor dimensions



Magnetic door sensor dimensions



Permanent magnet dimensions

Accessories

Permanent magnet for magnetic door sensor (57040-000) - 10024211

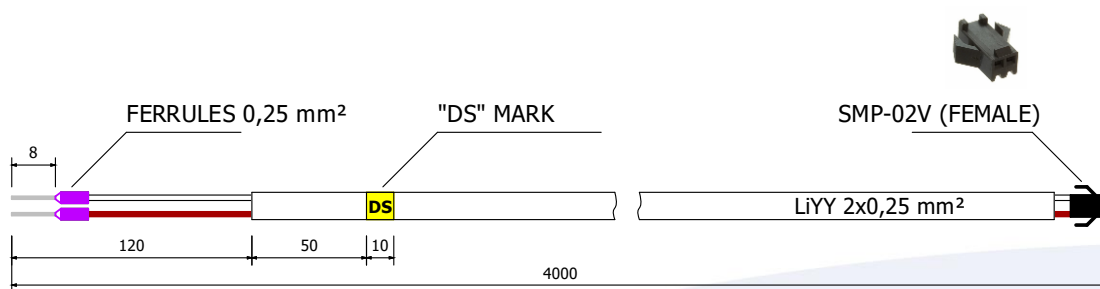
The permanent magnet is installed on the opposite side of the magnetic door sensor.



Permanent magnet

Cable „DS“ for magnetic door sensor - 10071190

The cable is used to connect the magnetic door sensor and the junction box.



Cable „DS“ for magnetic door sensor

Screw for the magnetic door sensor - 10023649

Screw for fixing the magnetic door sensor to the door frame (DIN7991, A2, M4x12). Two pieces needed.



Screw for the magnetic door sensor